

## 1.44 V2 ICP High frequency matching unit.

Drawing Number TP310777

Figure Number 44

STS Ref. AS310777

**Note** The parts list for this assembly extends over two pages. The illustration (figure 41) will be repeated to ensure ease of cross-referencing.

Item	Description of Part	Part Number	Notes
1	Earth stud assembly M5	AS304349	
2	Capacitor bracket (long)	DT306657	
3	Coupling, 4mm x 1/4"dia	561046	
4	Isolation drive coupling	DT306919	
5	Connector N type skt	535000	
6	Busbar-N type to cap	DT307599	
7	Busbar-cap to earth	DT307601	
8	Feedthrough – platen coil	DT306550	
9	Coil clamp top 8125-129	1C4674	
10	Coil clamp bottom	1C4676	
11	Coil 8 turn platen	DT310719	
12	Capacitor, variable 100pF	512531	
13	Support pillar - 52mm	DT307573	
14	Microswitch cabinet	550019	
15	Gearbox 640:1 ratio	560018	

# ICP Chamber Weighted Clamp Version 2

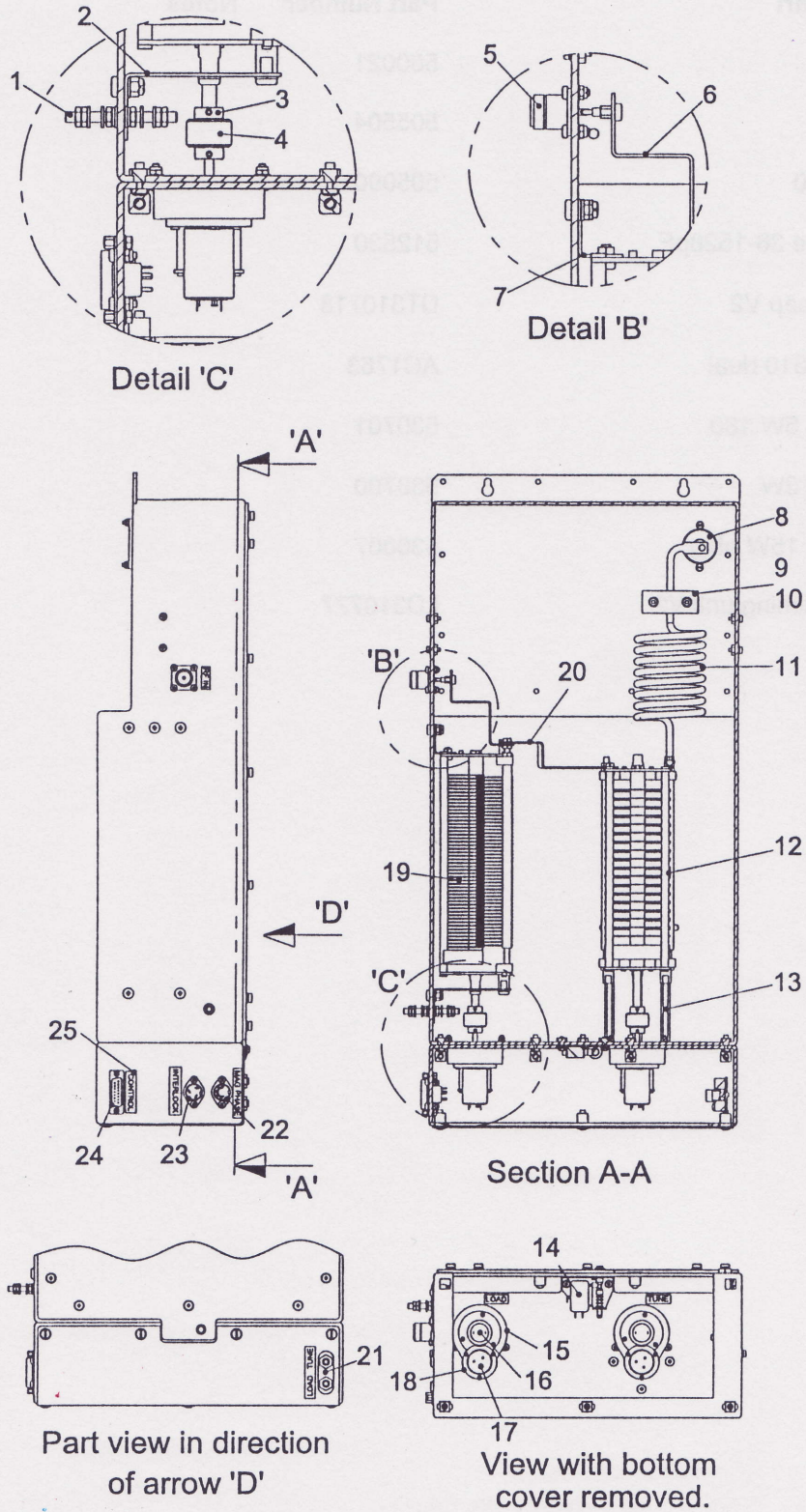


Figure 44 V2.0 ICP High frequency matching unit

## 1.44 V2.0 High frequency matching unit (continued)

Item	Description of Part	Part Number	Notes
16	Motor	560021	
17	Potentiometer kit	505504	
18	Potentiometer 5K0	505090	
19	Capacitor, variable 36-1528pF	512530	
20	Link busbar cap/cap V2	DT310718	
21	PWB 8063-003 A310 dual	AC1763	
22	Connector din skt 5W 180	530701	
23	Connector din skt 3W	530700	
24	Connector D type 15W plug	530007	
25	Label set H/F matching/unit V2	LD310777	