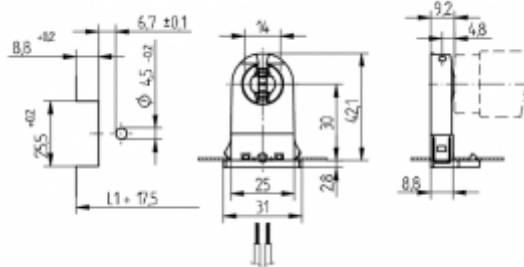


**Linear Fluorescents: General Applications**

26.293.1111

G13 (Medium Bi-Pin): Push-Through Lampholders



L1+17.5: Recommended cutout spacing . "L1" distance is determined by the length of the respective lamp.

color	pkg.	wt.	part no.
white	500	6 g	26.293.1111.50

Approval: cULus

Lamp center: 30 mm  
Push through mount

Housing: PC  
Rotor: PBT

- For cut-outs open at the rear or enclosed cut-outs with 4.5 mm dia. locating hole
- A pair of lampholders provides a lamp length tolerance compensation of 3 mm

T 130	Tm110	U out 500 V							
							18 AWG 0.5 - 1.0 mm <sup>2</sup>	0.4 - 2.0	