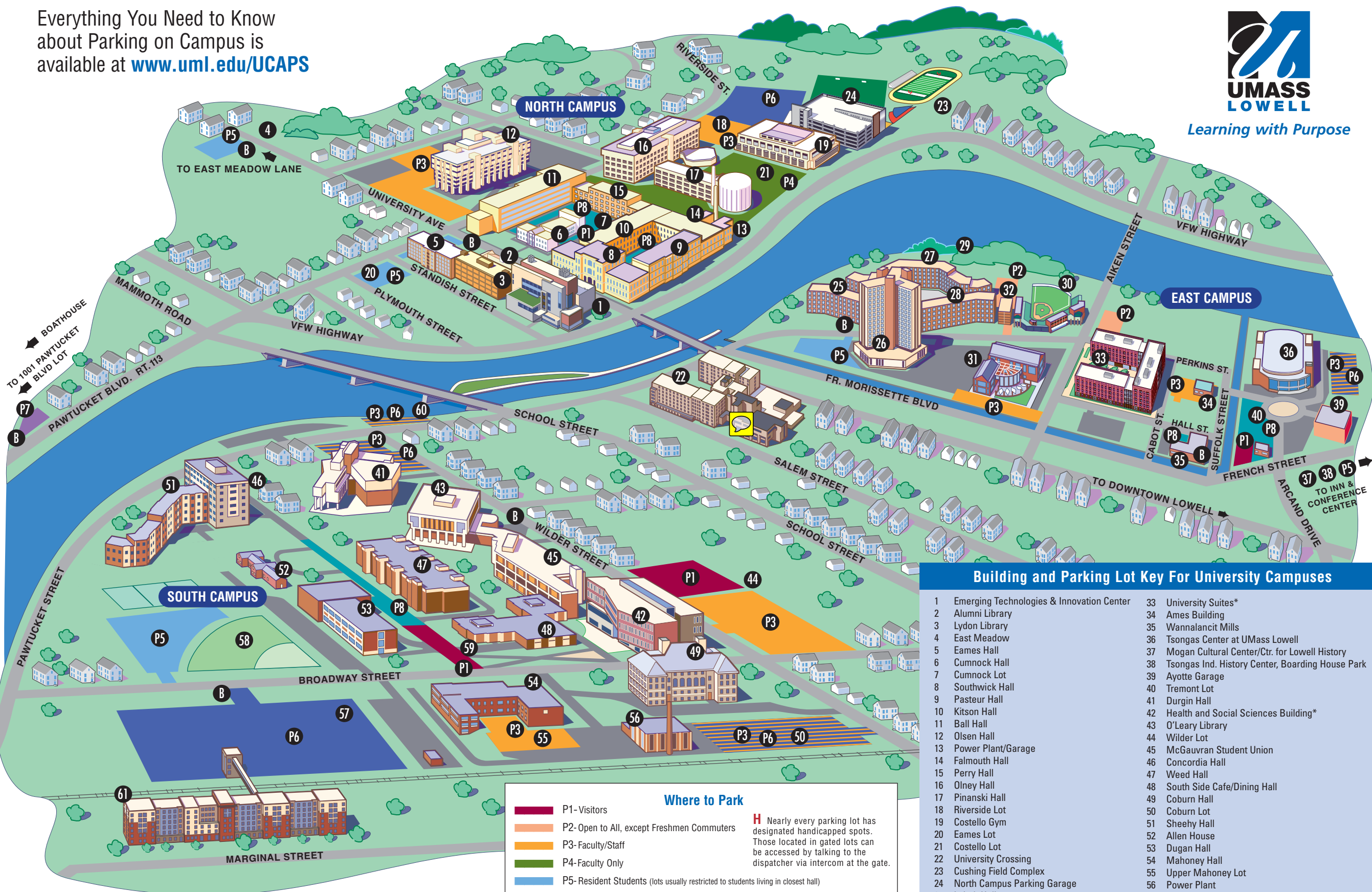


Everything You Need to Know about Parking on Campus is available at www.uml.edu/UCAPS



Learning with Purpose



Where to Park

- P1-Visitors
- P2-Open to All, except Freshmen Commuters
- P3-Faculty/Staff
- P4-Faculty Only
- P5-Resident Students (lots usually restricted to students living in closest hall)
- P6-Commuter, Upperclassmen
- P7-Commuter, Freshmen
- P8-Reserved Parking

H Nearly every parking lot has designated handicapped spots. Those located in gated lots can be accessed by talking to the dispatcher via intercom at the gate.

Building and Parking Lot Key For University Campuses

1 Emerging Technologies & Innovation Center	33 University Suites*
2 Alumni Library	34 Ames Building
3 Lydon Library	35 Wannalancit Mills
4 East Meadow	36 Tsongas Center at UMass Lowell
5 Eames Hall	37 Mogan Cultural Center/Ctr. for Lowell History
6 Cumnock Hall	38 Tsongas Ind. History Center, Boarding House Park
7 Cumnock Lot	39 Ayotte Garage
8 Southwick Hall	40 Tremont Lot
9 Pasteur Hall	41 Durgin Hall
10 Kitson Hall	42 Health and Social Sciences Building*
11 Ball Hall	43 O'Leary Library
12 Olsen Hall	44 Wilder Lot
13 Power Plant/Garage	45 McGauvran Student Union
14 Falmouth Hall	46 Concordia Hall
15 Perry Hall	47 Weed Hall
16 Olney Hall	48 South Side Cafe/Dining Hall
17 Pinanski Hall	49 Coburn Hall
18 Riverside Lot	50 Coburn Lot
19 Costello Gym	51 Sheehy Hall
20 Eames Lot	52 Allen House
21 Costello Lot	53 Dugan Hall
22 University Crossing	54 Mahoney Hall
23 Cushing Field Complex	55 Upper Mahoney Lot
24 North Campus Parking Garage	56 Power Plant
25 Leitch Hall	57 Broadway/Riverview Lot
26 Fox Hall	58 Riverview Field
27 Donahue Hall	59 Admissions Visitor Parking
28 Bourgeois Hall	60 Sheehy Parking Lot
29 Riverwalk	61 Riverview Suites*
30 LeLacheur Park	
31 Campus Center	
32 East Parking Garage	

Parking on Campus

Visitors may park in lots marked "Visitor" or "Open to All." Reservations or hang tags are required by contacting UCAPS at (978) 934-2800 or UCAPS@uml.edu.

All members of the UMass Lowell community must register any vehicle they operate on campus. Instructions for registering a vehicle are at www.uml.edu/UCAPS.

This map is for reference only, and lot designations are subject to change. Please refer to www.uml.edu/maps for current information.

P Parking **B** Bus stop

* Under construction

DIRECTIONS TO UMASS LOWELL

Directions and office locations are also available at www.uml.edu/directions

Traveling north on Route 3

Take Exit 30B to the Lowell Connector and follow the directions below.

Traveling south on Route 3

Take Exit 30A for I-495 North. Immediately take Exit 35C for the Lowell Connector. Follow the directions below.

Traveling north or south on I-495

Take Exit 35C to the Lowell Connector. Follow the directions below.

To UMass Lowell South from the Lowell Connector

From the Connector take Exit 3 for Industrial Avenue. Go right at the stop sign at the end of the ramp then take the first right off the rotary onto Industrial Avenue. Proceed straight at the first traffic light at the intersection with Chelmsford Street (Route 110). Industrial Avenue becomes Stevens Street at this intersection.

Follow Stevens Street for approximately 1.5 miles. Take a right onto Middlesex Street. Take the first left at the blinking light onto Wilder Street. Proceed a short distance to the light at the intersection of Wilder and Broadway Streets. UMass Lowell South is ahead to the left.

To UMass Lowell North, UMass Lowell East, Campus Recreation Center, LeLacheur Park, Wannalancit Mills or Tsongas Center at UMass Lowell from the Lowell Connector

From the Connector, take Exit 5B onto Thorndike Street. After four traffic lights (1/2 mile), Thorndike Street bears right and becomes Dutton Street. Continue on Dutton Street about 1/2 mile, proceed straight onto Arcand Drive. At the end of Arcand Drive, the Tsongas Center is straight ahead.

Turn left at the traffic light onto Morissette Boulevard. Wannalancit Mills is one block on the right. Proceed to the second light at Aiken Street and take a right to reach UML East, LeLacheur Park and the Campus Recreation Center. For UMass Lowell North, continue to the third light and turn right onto the University Avenue Bridge. Once across the bridge, UMass Lowell North is on either side of the street.



Relative distances have been distorted to provide space for additional map details.

OFFICE LOCATIONS

Admissions Offices

Undergrad & Grad Dugan 110
Continuing Studies Southwick 303

Advancement & Alumni Southwick 250

Bookstores

North Falmouth Basement
South Dining Hall

Business Offices Wannalancit Mills

Chancellor's Office Allen House

College Offices

Fine Arts, Humanities
& Social Sciences Durgin 106
Education O'Leary 510
Engineering Kitson 311
Health & Environment Weed 104
Management Pasteur 305
Sciences Olney 524

University Police Ball 127

Administrative Offices

Bursar's Office Dugan 103
Career Services Southwick 328
Centers for Learning Southwick 308 / O'Leary 3FL
Financial Aid Dugan 102
Multicultural Affairs McGauvran 2FL
Registrar Dugan 101
Residence Life Fox Hall 1FL
Student Activities and Leadership McGauvran 2FL
Student Financial Services Dugan 101
Student Disability Services Cumnock C6
UCard, Access and Parking Services South Dining Hall

Parking on Campus

Visitors may park in lots marked "Visitor" or "Open to All." Reservations or hang tags are required by contacting UCAPS at (978) 934-2800 or UCAPS@uml.edu.

All members of the UMass Lowell community must **register any vehicle** they operate on campus. Instructions for registering a vehicle are at www.uml.edu/UCAPS.

This map is for reference only, and lot designations are subject to change. Please refer to www.uml.edu/maps for current information.



Learning with Purpose

UMass Lowell
One University Avenue
Lowell, MA 01854
www.uml.edu



Learning with Purpose

CampusMap

