

- (2) Remove the side plates (Items 12 and 13 in Figure 5-4; Items 15 and 16 in Figure 5-5) and put them aside.
- (3) Remove six screws, Item 62, from the top cover and lift it off.
- (4) Remove the following hardware from the matching network assembly:
 - (a) three brackets (Item 10 in Figure 5-4; Item 22 in Figure 5-5).
 - (b) L-bracket on bottom of rear panel.
 - (c) Four lower support posts (Item 15 in Figure 5-4; Item 18 in Figure 5-5).
- (5) Attach the hardware to the top plate.
- (6) Fasten the matching network to the support hardware.
- (7) Refer to Figure 2-10, showing connections to the rotary switch (Item 45 in Figure 5-4; Item 46 in Figure 5-5). Connect a copper strap, 1/2 inch by 0.020 inch, from an appropriate terminal on the rear wafer to the corresponding Sputter-gun(s).
- (8) Replace the top cover and side plates.

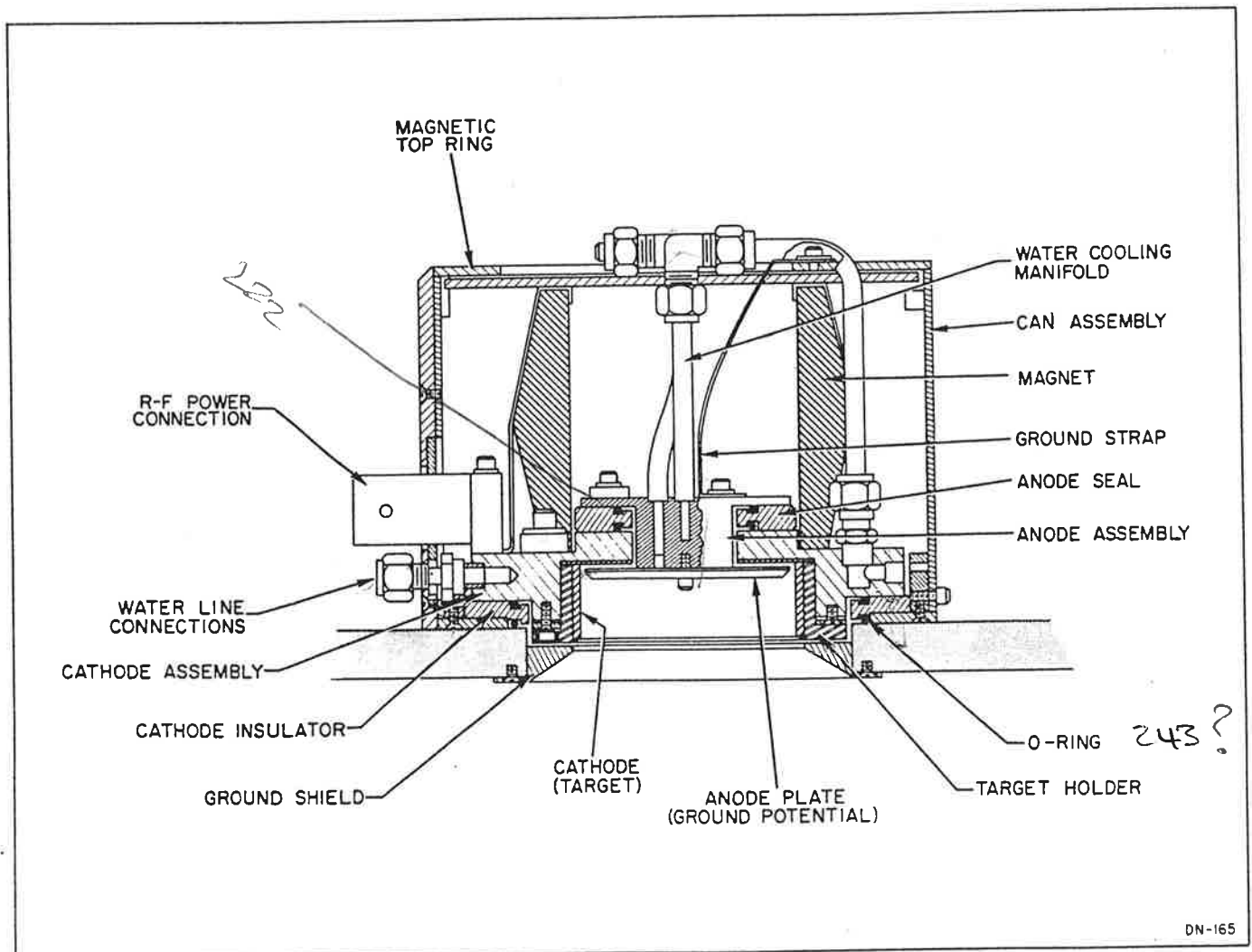


Figure 2-6.
Cross-Sectional View of Model S-310
R-F Sputtergun